

Biotinylated Human LAP (TGF beta 1) Protein

Cat. No. LAP-HM4B1B

Description

Source	Recombinant Biotinylated Human LAP (TGF beta 1) Protein is expressed from HEK293 with His tag and Avi tag at the N-Terminus. It contains Leu30-Arg278(C33S).
Accession	P01137
Molecular Weight	The protein has a predicted MW of 31.4 kDa. Due to glycosylation, the protein migrates to 45-50 kDa based on Bis-Tris PAGE result.
Endotoxin	Less than 1EU per µg by the LAL method.
Purity	> 95% as determined by Bis-Tris PAGE

Formulation and Storage

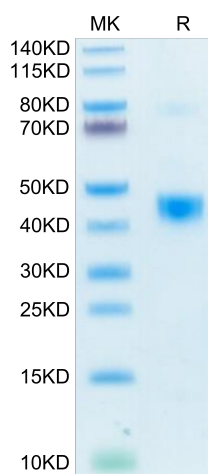
Formulation	Lyophilized from 0.22µm filtered solution in PBS (pH 7.4). Normally 8% trehalose is added as protectant before lyophilization.
Reconstitution	Centrifuge the tube before opening. Reconstituting to a concentration more than 100 µg/ml is recommended. Dissolve the lyophilized protein in distilled water.
Storage	-20 to -80°C for 12 months as supplied from date of receipt. -80°C for 3 months after reconstitution. Recommend to aliquot the protein into smaller quantities for optimal storage. Please minimize freeze-thaw cycles.

Background

Latent TGF beta 1 cDNA encodes a 390 amino acid precursor that contains a 29 aa signal peptide and a 361 aa proprotein. A furinlike convertase processes the proprotein to generate an Nterminal 249 aa latencyassociated peptide (LAP) and a Cterminal 112 aa mature TGF beta 1. Disulfidelinked homodimers of LAP and TGF beta 1 remain noncovalently associated after secretion, forming the small latent TGF beta 1 complex.

Assay Data

Bis-Tris PAGE

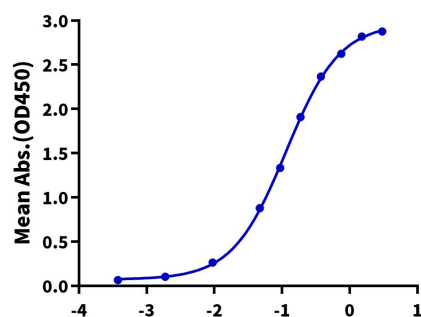


Biotinylated Human LAP (TGF beta 1) on Bis-Tris PAGE under reduced condition. The purity is greater than 95%.

ELISA Data

Biotinylated Human LAP (TGF beta 1), His Tag ELISA

0.2µg Human ITGAV&ITGB6, His Tag Per Well



Immobilized Human ITGAV&ITGB6, His Tag at 2µg/ml (100µl/well) on the plate. Dose response curve for Biotinylated Human LAP (TGF beta 1), His Tag with the EC50 of 0.11µg/ml determined by ELISA (QC Test).